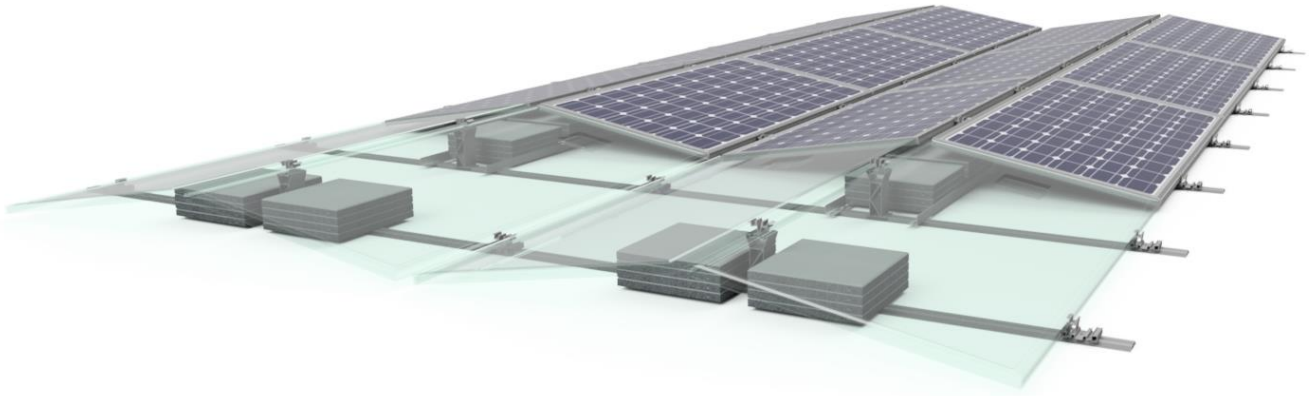


SOLFIE DOUBLE - H2300 HELIOS Flat Roof



Materials

- Aluminum Alloy 6005
- Inox A2 Screws

Technical characteristics

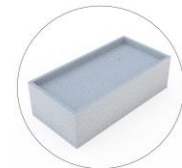
- Series: H2300
- Type: Solfie
- Application: Flat roof
- Alignment: Landscape
- Inclination: 10°
- Foundation: Self ballasted

Certification

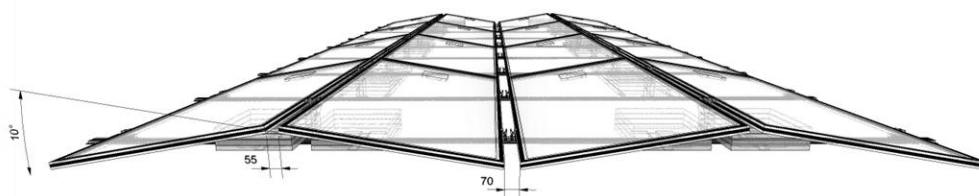
- Static Analysis According Eurocodes 1,3,9
- ISO 9001 / ISO 14001 / ISO 50001
- CE
- Technical Manual
- Alumil 20 Year Guarantee

Solfie solution is a low-ballast mounting system for PV installations on flat roofs. The system is designed to hold one panel in landscape orientation and with 10 degrees inclination. Its main goal is to offer the ability to installer not to damage the insulation of the roof by avoiding any kind of roof penetration. To achieve that we use special concrete blocks. Certified according to Eurocodes and with a 20 years warranty according to warranty conditions the system provides protection for your rooftop and offers an easy, fast and economical photovoltaic installation made by aluminum.

- ✓ Quick & easy installation



TECHNICAL DETAILS



Profile	H2410
W = width (mm)	92
H = Height (mm)	13.4
Weight (kg/m)	0.804
Lengths (m)	2.55 / 2.7 / 3.1 / 4.8 / 5.1 / 5.8 / 6.5

